

# The $\mu$ logger – THUM

## Key Features

Serial (RS232) connectivity

Temperature and Humidity recording.

Dew Point calculation

Highly accurate and stable digital CMOS sensor.

Temperature range  $-40^{\circ}\text{C}$  to  $+85^{\circ}\text{C}$

Humidity range 0 – 100%

Temperature accuracy  $0.4^{\circ}\text{C}$

Temperature resolution  $0.04^{\circ}\text{C}$

Humidity accuracy 2%.

Humidity resolution  $< 0.05\%$

Can operate for up to two years on an AA battery.

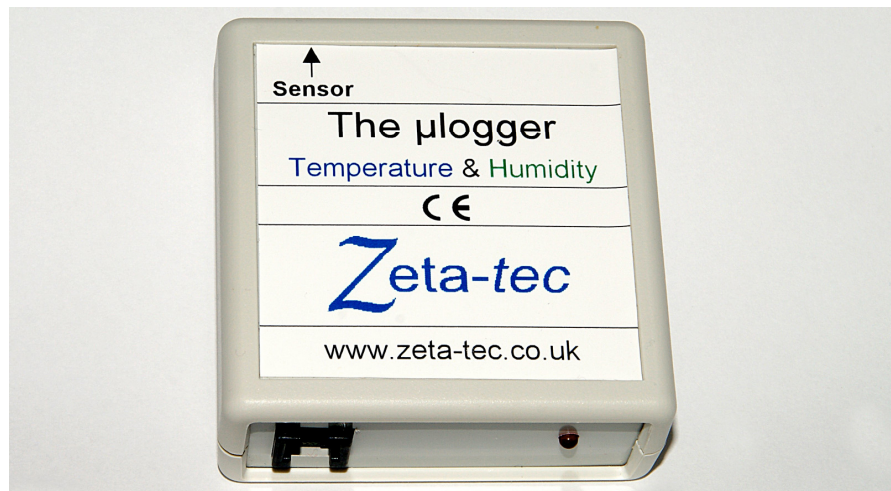
Up to 32000 samples can be stored in non-volatile memory.

Small size: 65 x 65 x 28mm.

Available from:

Zeta-tec Limited  
11 Larches Road  
DURHAM  
DH1 4NL  
U.K.

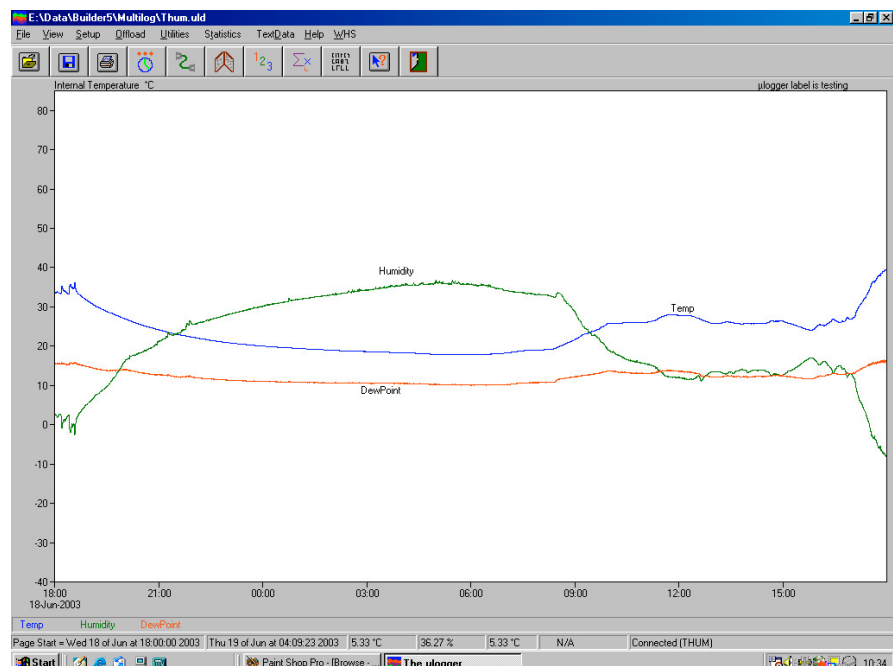
Phone: + 44 (0)191-383-9974  
Fax: + 44 (0)191-303-8075  
e-mail: [sales@zeta-tec.co.uk](mailto:sales@zeta-tec.co.uk)  
[www.zeta-tec.co.uk](http://www.zeta-tec.co.uk)



The  $\mu$ logger – THUM (pronounced micro-logger) is a small, high quality and versatile battery powered remote data logger. This  $\mu$ logger has two sensors: Temperature & Humidity. Additionally Dew point can be calculated from the Temperature and Humidity data, this information is displayed as a 'third' channel.

A high quality precision temperature and humidity sensor is used which gives a digital output and has excellent long-term stability.

The software allows the  $\mu$ logger to be configured before leaving it at the logging site. At the end of the logging period your data is offloaded and can be displayed and analysed using the same software.



# TECHNICAL SPECIFICATIONS

## Hardware

- ❑ Temperature and Humidity recording.
- ❑ Dew Point calculation.
- ❑ Highly accurate and stable digital CMOS sensor.
- ❑ Temperature range  $-40^{\circ}\text{C}$  to  $+85^{\circ}\text{C}$ .
- ❑ Humidity range 0 – 100%.
- ❑ Temperature accuracy  $0.4^{\circ}\text{C}$ .
- ❑ Temperature resolution  $0.04^{\circ}\text{C}$ .
- ❑ Humidity accuracy 2%.
- ❑ Humidity resolution  $< 0.05\%$ .
- ❑ Up to 32000 samples can be stored in non-volatile memory.
- ❑ Small size: 65 x 65 x 28mm.
- ❑ Logging interval 1sec. - 12 hours.
- ❑ 1 AA user replaceable battery (lasts for up to two years).
- ❑ High specification industrial grade components used throughout for maximum reliability.

## Software (a trial version can be downloaded from our Web-site)

- ❑ Runs under W95 (or greater) or NT 4.0 (or greater).
- ❑ Graphical or textual display for your data.
- ❑ Zoom in on your data.
- ❑ Scroll through your data.
- ❑ Min., Max. and average calculation.
- ❑ Save and load data and files.
- ❑ Save and load configuration files.
- ❑ Set start & stop time (stop when full, after a set time or allow memory rollover).
- ❑ Log while connected to PC.
- ❑ Interrupt driven serial comms. (COM 1 – 4).
- ❑ Print data graphs.
- ❑ Export data to your spreadsheet.

Available from Zeta-tec: Model No. ZT-1004.

E & O.E.